

UNLESS OTHERWISE SPECIFIED DIMENSIONS ARE IN INCHES FRACTIONS DECIMALS ANGLES ± 1/64 .XX ± .02 .XXX ± .01

THIS DOCUMENT AND ITS CONTENTS ARE THE PROPERTY OF GAI-TRONICS CORPORATION (GTC), AND SHALL NOT BE REPRODUCED, COPIED, OR TRANSMITTED IN ANY FORM OR BY ANY MEANS, ELECTRONIC OR MECHANICAL, INCLUDING PHOTOCOPYING, RECORDING, OR BY ANY INFORMATION STORAGE AND RETRIEVAL SYSTEM, WITHOUT THE EXPRESS PRIOR WRITTEN CONSENT OF GTC. DISCLOSE, DIRECTLY OR INDIRECTLY, IN WHOLE OR IN PART, THE DOCUMENT/CONTENTS TO ANY PERSON OR ENTITY, AND SHALL NOT USE, IN WHOLE OR IN PART, THE DOCUMENT/CONTENTS, EXCEPT STRICTLY AS AUTHORIZED BY GTC.

REVISION			
REV.	DESCRIPTION	ENGR. APVD.	DATE
F	PER EN #97-100 / SHM	BKH	6/4/87
G	PER EN #91-484 / KPT	RLA	10/9/91
H	REV. PER EDN #03-385 / NSW	KAS	2/3/04

1. COLOR CODE OF SYSTEM CABLE BASED ON GAI-TRONICS CORP. Mo. 60038-101 8-CONDUCTOR CABLE.

2. COLOR CODE OF SPEAKER CABLE BASED ON GAI-TRONICS CORP. No. 60021-301 2-CONDUCTOR CABLE (TWISTED PAIR #18 AWG). CONNECTION SHOWN FOR 16 OHM SPEAKER. MOVE W/BK WIRE FROM TERMINAL #19 TO TERMINAL #18 FOR 8 OHM SPEAKER.

3. THE NOTATION COLOR #1/ COLOR #2 (e.g. R/BL) DENOTES BASIC WIRE COLOR #1 WITH COLOR #2 STRIPE.

4. SUGGESTED MOUNTING HEIGHT OF STATION (FROM CENTERLINE OF STATION TO FLOOR): 54 INCHES (1400 mm).

5. EXTERNAL CONDUITS IN CLASS I; DIV. 1; GROUPS C & D AREAS TO HAVE GAS SEALS NOT MORE THAN 18 INCHES (457 mm) FROM STATION. EXTERNAL CONDUITS IN CLASS II AND CLASS III AREAS TO HAVE SEALS IF CONDUIT SYSTEM IS NOT DUST-TIGHT.

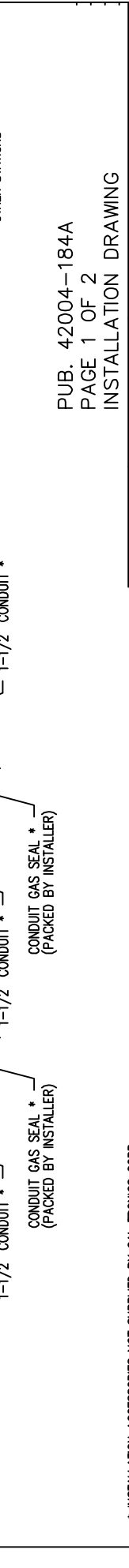
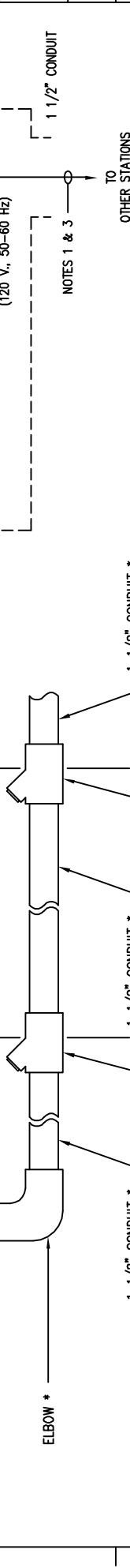
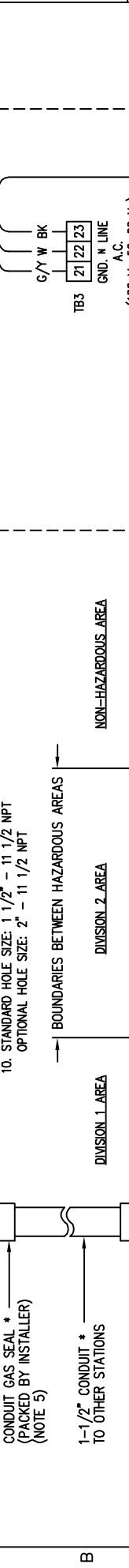
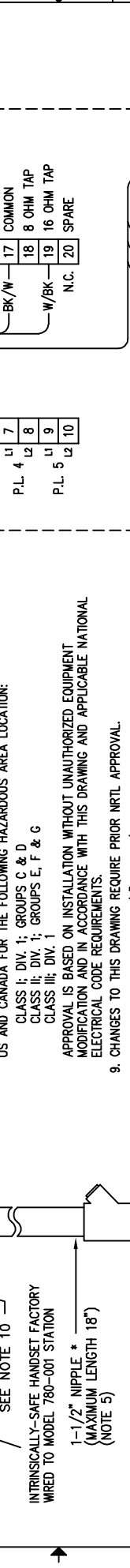
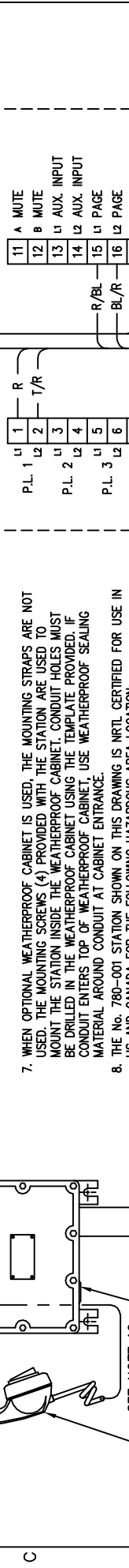
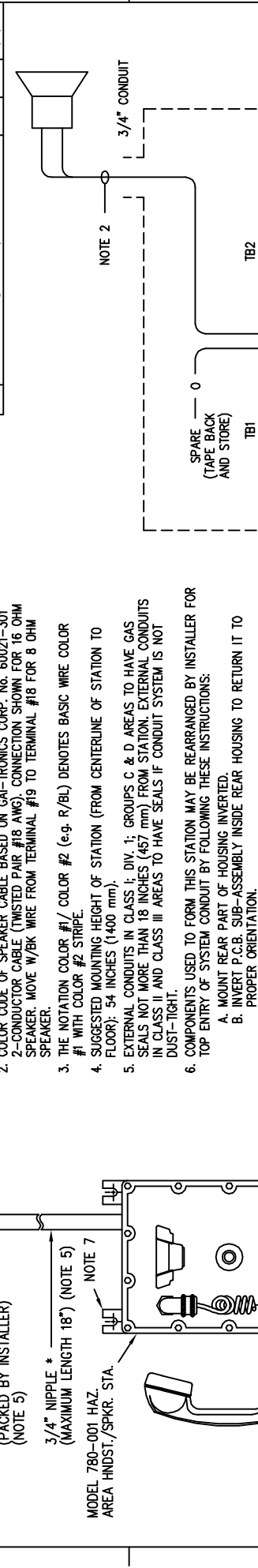
6. COMPONENTS USED TO FORM THIS STATION MAY BE REARRANGED BY INSTALLER FOR TOP ENTRY OF SYSTEM CONDUIT BY FOLLOWING THESE INSTRUCTIONS:  
 A. MOUNT REAR PART OF HOUSING INVERTED.  
 B. INVERT P.C.B. SUB-ASSEMBLY INSIDE REAR HOUSING TO RETURN IT TO PROPER ORIENTATION.

7. WHEN OPTIONAL WEATHERPROOF CABINET IS USED, THE MOUNTING STRAPS ARE NOT USED. THE MOUNTING SCREWS (4) PROVIDED WITH THE STATION ARE USED TO MOUNT THE STATION INSIDE THE WEATHERPROOF CABINET. CONDUIT HOLES MUST BE DRILLED IN THE WEATHERPROOF CABINET USING THE TEMPLATE PROVIDED. IF CONDUIT ENTERS TOP OF WEATHERPROOF CABINET, USE WEATHERPROOF SEALING MATERIAL AROUND CONDUIT AT CABINET ENTRANCE.

8. THE No. 780-001 STATION SHOWN ON THIS DRAWING IS NRTL CERTIFIED FOR USE IN US AND CANADA FOR THE FOLLOWING HAZARDOUS AREA LOCATION:  
 CLASS I; DIV. 1; GROUPS C & D  
 CLASS II; DIV. 1; GROUPS E, F & G  
 CLASS III; DIV. 1

9. APPROVAL IS BASED ON INSTALLATION WITHOUT UNAUTHORIZED EQUIPMENT MODIFICATION AND IN ACCORDANCE WITH THIS DRAWING AND APPLICABLE NATIONAL ELECTRICAL CODE REQUIREMENTS.

10. STANDARD HOLE SIZE: 1 1/2" - 11 1/2 NPT  
 OPTIONAL HOLE SIZE: 2" - 11 1/2 NPT



3/4" CONDUIT \* TO SPEAKER (SEE SPEAKER INSTALLATION INSTRUCTIONS)

CONDUIT GAS SEAL \* (PACKED BY INSTALLER) (NOTE 5)

3/4" NIPPLE \* (MAXIMUM LENGTH 18") (NOTE 5)

NOTE 7

MODEL 780-001 HAZ. AREA HANDST./SPKR. STA.

SEE NOTE 10

INTRINSICALLY-SAFE HANDSET STATION WIRED TO MODEL 780-001 STATION

1-1/2" NIPPLE \* (MAXIMUM LENGTH 18") (NOTE 5)

CONDUIT GAS SEAL \* (PACKED BY INSTALLER) (NOTE 5)

1-1/2" CONDUIT \* TO OTHER STATIONS

ELBOW \*

1-1/2" CONDUIT \* (PACKED BY INSTALLER)

CONDUIT GAS SEAL \* (PACKED BY INSTALLER)

1-1/2" CONDUIT \* (PACKED BY INSTALLER)

NON-HAZARDOUS AREA

DIVISION 2 AREA

DIVISION 1 AREA

BOUNDARIES BETWEEN HAZARDOUS AREAS

1-1/2" CONDUIT \* (PACKED BY INSTALLER)

1-1/2" CONDUIT \* (PACKED BY INSTALLER)

CONDUIT GAS SEAL \* (PACKED BY INSTALLER)

1-1/2" CONDUIT \* (PACKED BY INSTALLER)

\* INSTALLATION ACCESSORIES NOT SUPPLIED BY GAI-TRONICS CORP. BUT MUST MEET NATIONAL ELECTRIC CODE REQUIREMENTS. SMALLER CONDUIT SIZES MAY BE USED WITH REDUCERS IF WITHIN N.E.C. REQUIREMENTS.

JOB DWG. No.		CONTRACT No.	
GAI-TRONICS CORPORATION READING, PA 19607 USA		No. 780-001	
UNLESS OTHERWISE SPECIFIED DIMENSIONS ARE IN INCHES FRACTIONS DECIMALS ANGLES ± 1/64 .XX ± .02 .XXX ± .01		DIV. 1 HAZ. STA. 120 VAC, 1PL	
MATERIAL		INSTALLATION DRAWING	
FINISH		SIZE FSCM No. C	
DO NOT SCALE DWG.		DWG NO. 70628	
APVD. RER		SCALE	
11/4/82		SHEET 1 OF 1	

PUB. 42004-184A  
 PAGE 1 OF 2  
 INSTALLATION DRAWING

REVISION	
REV.	DESCRIPTION
G	PER EN #99-280 / SMM
H	PER EN #91-485 / KPT / RLA
J	REV. PER EDN #03-386 / NSW

ENGR.	APVD.	DATE
BKH		9/15/89
BBP		10/9/91
KAS	JUP	2/3/04

THIS DOCUMENT AND ITS CONTENTS ARE THE PROPERTY OF GAI-TRONICS CORPORATION (GTC), AND SHALL NOT BE REPRODUCED, COPIED, OR TRANSMITTED IN ANY FORM OR BY ANY MEANS, WITHOUT THE EXPRESS PRIOR WRITTEN CONSENT OF GTC. DISCLOSE, DIRECTLY OR INDIRECTLY, IN WHOLE OR IN PART, THE DOCUMENT/CONTENTS TO ANY PERSON OR ENTITY, AND SHALL NOT USE, IN WHOLE OR IN PART, THE DOCUMENT/CONTENTS, EXCEPT STRICTLY AS AUTHORIZED BY GTC.

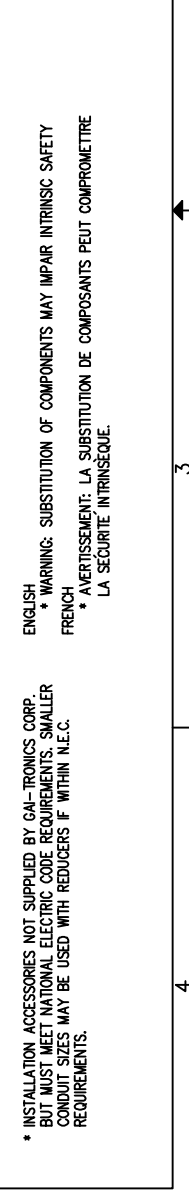
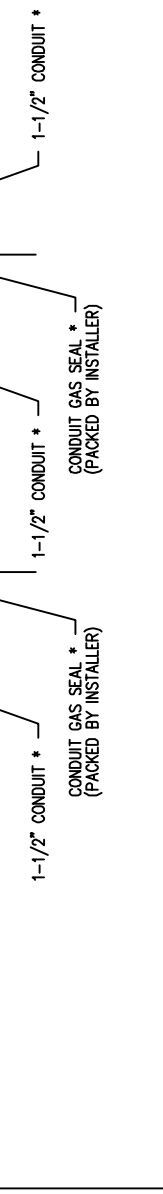
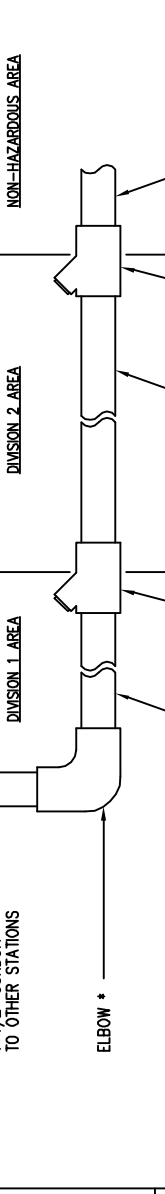
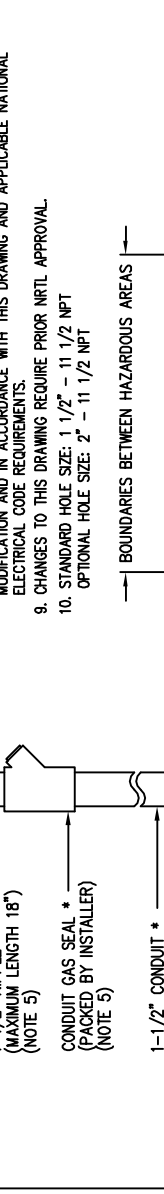
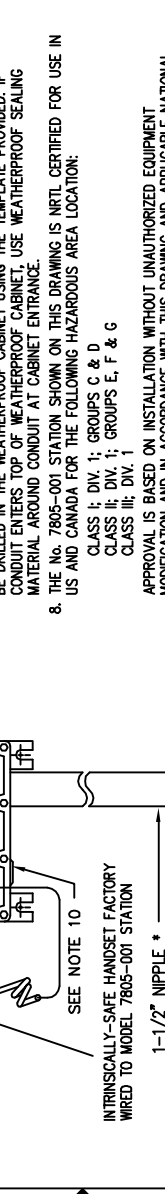
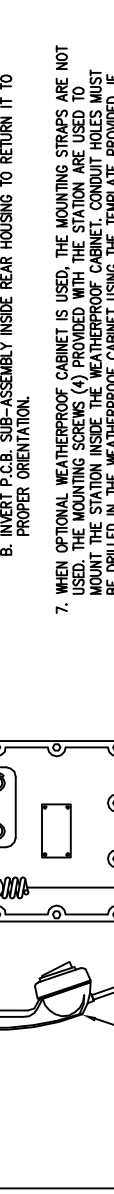
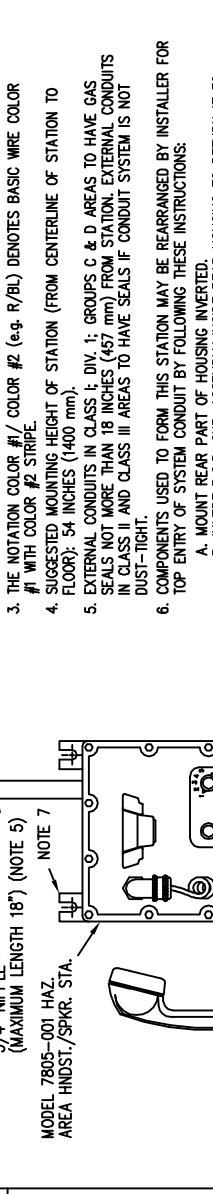
NOTES:

- COLOR CODE OF SYSTEM CABLE BASED ON GAI-TRONICS CORP. Mo. 60029-101 16-CONDUCTOR CABLE. WHERE STATIONS CAN BE SAFELY GROUNDED LOCALLY, No. 60024-201 14-CONDUCTOR CABLE (LACKING GREEN AND ORANGE CONDUCTORS) MAY BE USED.
- COLOR CODE OF SPEAKER CABLE BASED ON GAI-TRONICS CORP. No. 60021-301 2-CONDUCTOR CABLE (TWISTED PAIR #18 AWG). CONNECTION SHOWN FOR 16 OHM SPEAKER. MOVE W/BK WIRE FROM TERMINAL #19 TO TERMINAL #18 FOR 8 OHM SPEAKER.
- THE NOTATION COLOR #1/ COLOR #2 (e.g. R/BL) DENOTES BASIC WIRE COLOR #1 WITH COLOR #2 STRIPE.
- SUGGESTED MOUNTING HEIGHT OF STATION (FROM CENTERLINE OF STATION TO FLOOR): 54 INCHES (1400 mm).
- EXTERNAL CONDUITS IN CLASS I; DIV. 1; GROUPS C & D AREAS TO HAVE GAS SEALS NOT MORE THAN 18 INCHES (457 mm) FROM STATION. EXTERNAL CONDUITS IN CLASS II AND CLASS III AREAS TO HAVE SEALS IF CONDUIT SYSTEM IS NOT DUST-TIGHT.
- COMPONENTS USED TO FORM THIS STATION MAY BE REARRANGED BY INSTALLER FOR TOP ENTRY OF SYSTEM CONDUIT BY FOLLOWING THESE INSTRUCTIONS:
  - MOUNT REAR PART OF HOUSING INVERTED.
  - INVERT P.C.B. SUB-ASSEMBLY INSIDE REAR HOUSING TO RETURN IT TO PROPER ORIENTATION.
- WHEN OPTIONAL WEATHERPROOF CABINET IS USED, THE MOUNTING STRAPS ARE NOT USED. THE MOUNTING SCREWS (4) PROVIDED WITH THE STATION ARE USED TO MOUNT THE STATION INSIDE THE WEATHERPROOF CABINET. CONDUIT HOLES MUST BE DRILLED IN THE WEATHERPROOF CABINET USING THE TEMPLATE PROVIDED. IF CONDUIT ENTERS TOP OF WEATHERPROOF CABINET, USE WEATHERPROOF SEALING MATERIAL AROUND CONDUIT AT CABINET ENTRANCE.
- THE No. 7805-001 STATION SHOWN ON THIS DRAWING IS NRTL CERTIFIED FOR USE IN US AND CANADA FOR THE FOLLOWING HAZARDOUS AREA LOCATION:
  - CLASS I; DIV. 1; GROUPS C & D
  - CLASS II; DIV. 1; GROUPS E, F & G
  - CLASS III; DIV. 1

APPROVAL IS BASED ON INSTALLATION WITHOUT UNAUTHORIZED EQUIPMENT MODIFICATION AND IN ACCORDANCE WITH THIS DRAWING AND APPLICABLE NATIONAL ELECTRICAL CODE REQUIREMENTS.

9. CHANGES TO THIS DRAWING REQUIRE PRIOR NRTL APPROVAL.

10. STANDARD HOLE SIZE: 1 1/2" - 11 1/2 NPT  
 OPTIONAL HOLE SIZE: 2" - 11 1/2 NPT



JOB DWG. No.		CONTRACT No.	
GAI-TRONICS CORPORATION READING, PA 19607 USA		No. 7805-001	
UNLESS OTHERWISE SPECIFIED, DIMENSIONS ARE IN INCHES AND FRACTIONS DECIMALS ANGLES		DIV. I HAZ. H/S STA. 120 VAC, 5PL	
± 1/64" .XX ±.02 ±.1		INSTALLATION DRAWING	
MATERIAL		SIZE FSCM No.	
FINISH		C	
DO NOT SCALE DWG.		APVD. RER 11/4/82 SCALE	
ENGR. PMR 11/4/82		REV. J	
APVD. RER 11/4/82		DWG No. 70629	
SHEET 1 OF 1			

\* INSTALLATION ACCESSORIES NOT SUPPLIED BY GAI-TRONICS CORP. BUT MUST MEET NATIONAL ELECTRIC CODE REQUIREMENTS. SMALLER CONDUIT SIZES MAY BE USED WITH REDUCERS IF WITHIN N.E.C. REQUIREMENTS.

\* WARNING: SUBSTITUTION OF COMPONENTS MAY IMPAIR INTRINSIC SAFETY

\* AVERTISSEMENT: LA SUBSTITUTION DE COMPOSANTS PEUT COMPROMETTRE LA SECURITE INTRINSEQUE.